



**GRACIAS**  
INTERNATIONAL

 **15MM**  
THICKNESS

**600X600 MM**

**NUMBER**  
**ONE**  
**FULLBODY**  
**TILES**



# About US

## The new-age ceramic revolution that takes shape here at Gracias.

The tile composer - these words capture the essence Gracias International India's most preferred premium full body vitrified tiles manufacturer and exporter. Gracias is famously known so crediting its portfolio with the largest and most exclusive collection of full-body tiles in the ceramic industry.

The exceptional range of fullbody tiles and trendsetting collections like Rare & Unique, Sand Dune, Step Art, Terrazzo, Bold 15mm, Terrazzo, never seen before - Roman Collection of random punch profiles, Cloud Punch, River Punch, and Lenza Punch is what makes Gracias an industry leader in fullbody tiles.



The collections are available in numerous formats, finishes, and punch profiles. This excellent range is the result of years of experience, a state-of-the-art production facility, enormous production capacity, rigorous quality checks, and expert staff.

### Dynamic tiling

solutions for evolving spaces & lifestyle

Gracias and its offering of a wide range of fullbody tiles across various collections is a dedicated effort facilitating efficient, robust, and dynamic tiling solutions in your spaces. These collections are functionally balanced and aesthetically elegant to transform spaces into utilitarian, secure, impressive, and durable.

WIDEST RANGE  
OF FULLBODY TILE  
COLLECTION



# SUPERIOE FEATURES OF DIGITAL FULLBODY TILES

The SyncStone Collection features strength and resilience redefining features ideal to stand against the modern lifestyle usage and atrocities of everyday use.



## SOLID BODY

Durable and solid body due to the homogenous fullbody composition of the tiles.



## EASY TO CLEAN

Resists stains, scratches, and more requiring effortless regular cleaning only.



## ECOLOGICAL & SUSTAINABLE

The collection is a sustainable alternative to marble flooring making it ecological.



## ZERO MAINTENANCE

The surfaces are sturdy and resilient requiring no special maintenance.



## HIGH STRENGTH

The fullbody composition boasts high strength and resistance ideal for high traffic also.



## LOW WATER ABSORPTION

Exceptionally non-porous surface and revolutionary digital print make surface low water absorbing.

Explore extensive application indoors and outdoors with the aesthetic and resilient qualities of the exxclusive colletion

## APPLICATION AREAS



Kitchen



Living Room



Corporate Offices



Hotel & Restaurants



Bathroom



Public Place

# SURFACES & SIZES

## GRACIAS SURFACE

← Smooth Polished

Soft →

Soft + Meta Surfaces

Antibacterial, Antiviral,  
Hybrid + Technology

Structured →

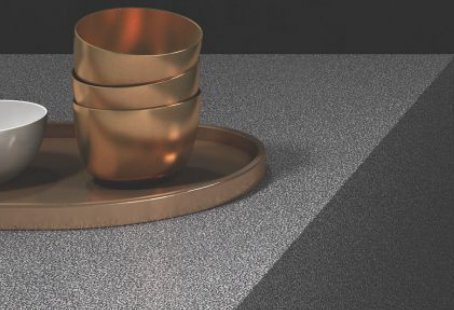
SIZES :

15 MM  
Thickness

600x  
600mm

**HYBRID+**  
TECHNOLOGY

**FULL BODY  
SKID RESISTANT  
GERM FREE**



**Protect**  
ANTIBATTERICO - ANTIMICROBIAL

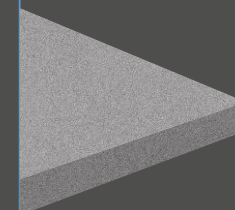
No Germs & Fungus, Less Health Issues | Get Rid of the Odours  
Various Applications | Improves Quality of Life

Gracias Fullbody Tiles Collections comes with protect antibacterial hybrid+ technology. These Vitrified matt tiles is an innovative product made from finest ingredients with anti microbial treatment that inhibits growth of germs like bacteria and fungus.

This full body product with skid resistant property can be safely used in hospitals, schools, residential areas, offices or any other commercial spaces, where longevity and hygiene is paramount.

#### FULL BODY

These tiles are ideal for zones with heavy footfall because even after extended use, their colour remains the same.



#### SKID RESISTANT

A versatile surface with skid resistant property makes these tiles perfect for zero slippage on slopes of upto 25°.



#### GERM FREE (99.9%)

A specially formulated anti-microbial application used during the manufacturing process enables these tiles to prevent habitation of germs like bacteria and fungus, making them an ideal choice for today's health-conscious consumers.




**IWA DOVE**

600x  
600mm



### Features

-  Solid Body
-  Easy to Clean
-  Zero Maintenance
-  High Strength

## Iwa Dove

Size  
600x  
600mm

Surface :  
Matt

Thickness :  
15mm\*

**OLIVIA**

600x  
600mm



## Olivia

Size  
600x  
600mm

Surface :  
Matt

Thickness :  
15mm\*

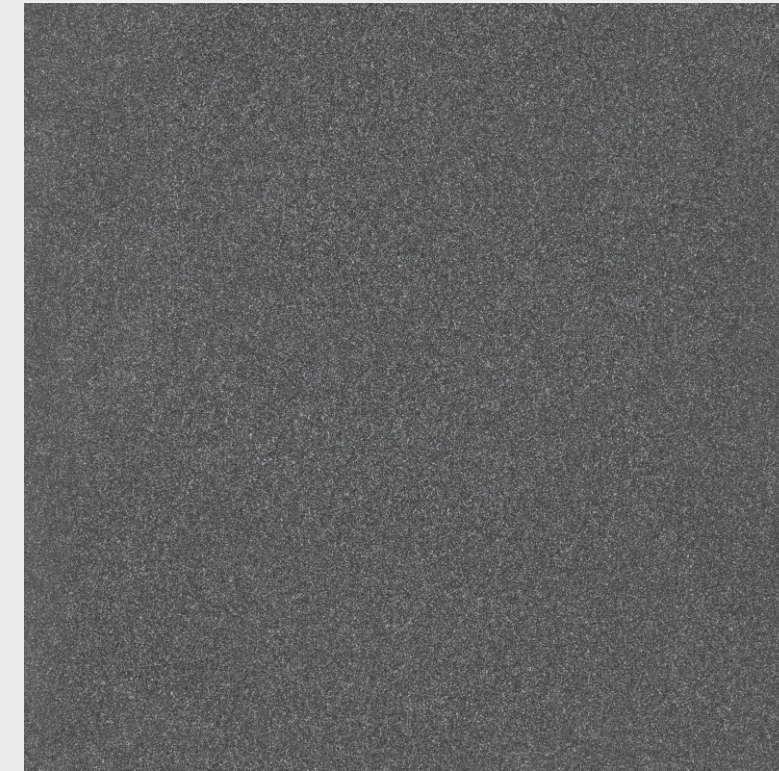
### Features

-  Solid Body
-  Easy to Clean
-  Zero Maintenance
-  High Strength





**PETRA ETHAN**

600x  
600mm



### Features

-  Solid Body
-  Easy to Clean
-  Zero Maintenance
-  High Strength

## Petra Ethan

Size  
600x  
600mm

Surface :  
Matt

Thickness :  
15mm\*

**STONE GREY** 

## Stone Grey

Size  
600x  
600mm

Surface :  
Matt

Thickness :  
15mm\*

### Features

-  Solid Body
-  Easy to Clean
-  Zero Maintenance
-  High Strength



# GRACIAS

INTERNATIONAL

Corporate Office :  
**Gracias International**  
312, Ishan Bussiness Center(IBC)  
8A-National Highway, Lalpar,  
Morbi 363642 Gujarat India.

E-Mail :  
**info@graciasinternational.com**

Website :  
**www.graciasinternational.com**

Contact No. :  
**+91 90999 00580 / +91 99795 22300**